



- Large, sculpted parts can be molded economically.
- Variable thickness walls allow for greater design freedom.
- Closed molds produce accurately molded and structurally strong parts.
- Lower tooling cost and shorter tooling lead time.
- A wide variety of material properties including UL94VO.
- Electronic components can be encapsulated.
- Metal parts can be encapsulated.

RIM parts are lower cost than the same parts made from metal or fiberglass.

Composites - RIM parts can be reinforced with many materials.

Exothermic capabilities:

- CAD Engineering Review
- Mold Design
- Mold Manufacture
- Mold Repair/ Modification
- RIM Molding
- Precision Painting
- Silk Screening
- Assembly

ISO 9002 Compliant

Exothermic Molding, Inc.
50 Lafayette Place
Kenilworth, New Jersey 07033
908 272-2299 • 908 272-3355 fax
sales@exothermic.com

Affordable Tooling, Along with the Combination of Light Weight Material and Significant Wall Strength, Make RIM the Only Feasible Choice

The makers of Tile-Redi Shower Modules had a revolutionary idea. This new concept in shower pan liners, an easy to install one-piece module, is a cost saving replacement for painstaking conventional felt/vinyl/mud installation for shower stalls. Tile-Redi allows contractors to save a great deal of money during the installation process by eliminating the need to spend time and labor forming the shower floor to a waterproof true pitch. The remarkably strong one-piece modules are instantly ready to accept ceramic tile or marble. An added advantage is a lifetime warranty against leaks.

When Tile-Redi decided to manufacture their new product, they turned to **Exothermic Molding** and the **RIM** process. The 37" x 37" one-piece module is ideally suited for **RIM**. The relatively large piece is very strong with wall thicknesses up to 1.25" (not possible with other processes), yet light weight with a material density of under 25 pounds per cubic foot. Thick, non-ribbed walls allow heavy loading capability without deflection. The PVC drain section of the module is encapsulated, allowing Tile-Redi to offer a lifetime warranty against leakage.

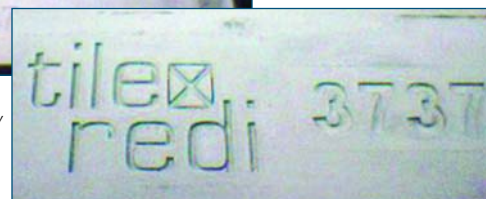
Half-inch nominal walls match up exactly with the waterproof wallboard used in construction, further simplifying the installation process. A fire retardant paint is applied by **Exothermic Molding** around the drain on the underside of the Redi-Tile module to pass flammability requirements. The part passes all domestic UL and Canadian building codes.

The hybrid cast aluminum mold, which combines both cast and machined surfaces, cost a modest \$15,000. By contrast, in thermoplastic structural foam the mold would cost a minimum of \$80,000, possibly much more. An injection mold could cost as much as \$150,000.

Three other sizes, a 37" x 37" corner unit, a 37" x 48" and 33" x 60", are under development.



Exothermic molding, Inc. through the RIM process provided strong one piece modules, ready for ceramic tile or marble.



Exothermic molding delivers large, lightweight RIM parts quickly ... at competitive prices.